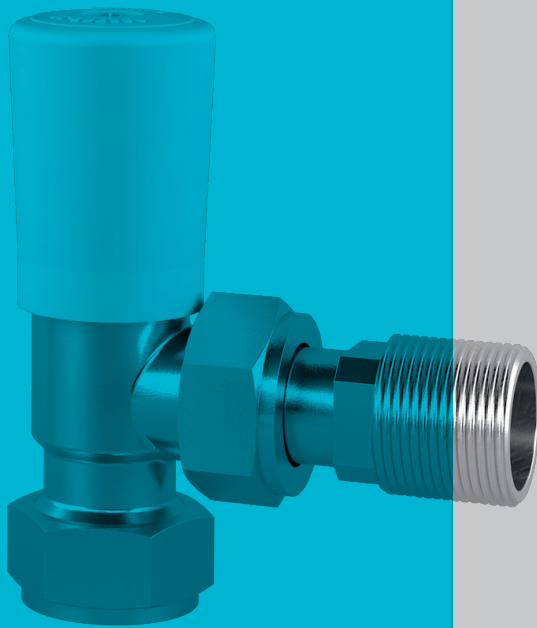


# NEW RT2I2 Thermostatic Radiator Valve

# Drayton

by Schneider Electric



#### NEW IMPROVED FEATURES:

- Fast-reacting liquid sensor
- Chrome valve and accessories



BRITISH BUILT TO LAST

## NEW RT2I2 THERMOSTATIC RADIATOR VALVE

We have upgraded our entry-level TRV to make it better than ever:

- Now with liquid sensor for a faster response to temperature changes and improved performance over time
- Now with chrome valves and matching accessories for improved aesthetics

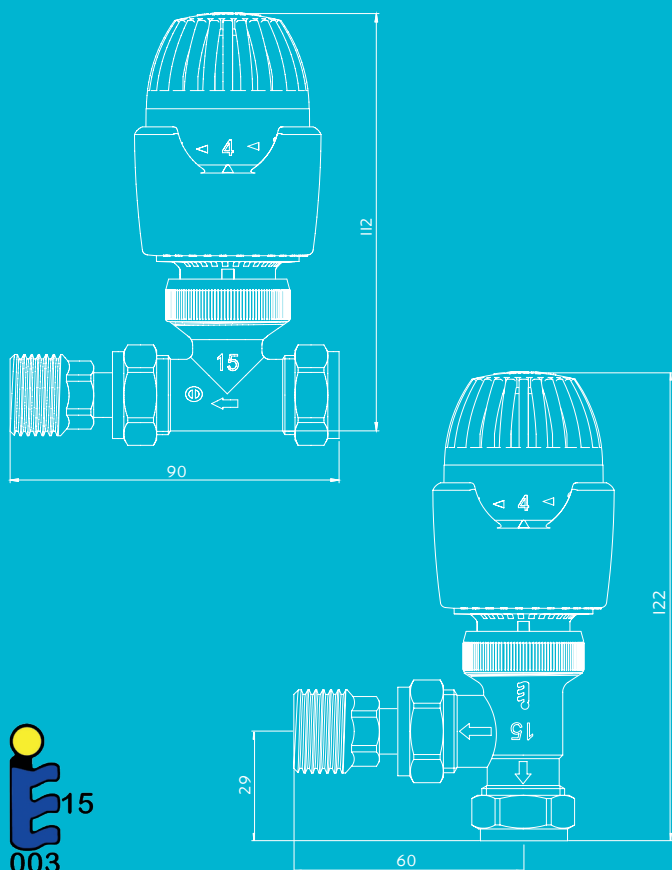
### FEATURES

- Compact design
- 8°C to 28°C setting range
- Range limiting
- 8°C frost protection setting
- Positive off position
- Double gland seal
- Reverse flow body (15mm angle)
- M30 x 1.5 head connection
- White wheelhead caps available (part no. 07 35 123) - converts valve body into manual valve
- Range of adaptors available for plastic (PEX) and multi-layer pipe

### FLOW NOISE THROUGH VALVES

It is strongly recommended that the differential pressure across the thermostatic valves should not exceed 0.2 bar to avoid flow related noise. A differential pressure regulating device, e.g. the Drayton automatic by-pass valve (Part No. 07 02 020) should be used.

### HOW WE MEASURE UP



## GETTING TECHNICAL

RT2I2 Head	
Minimum temperature setting (frost position)	* (8°C)
Temperature setting range	*-6 (8°C- 28°C)
Maximum static pressure	10 bar
Maximum differential pressure	0.2 bar for quiet operation (0.6 bar max)
Hysteresis	0.45K
Differential pressure influence	0.15K
Water temperature influence	0.9K
Response time	20 minutes
Maximum flow temperature	110°C

### FLOW KV VALUES AND SEAT AUTHORITY

	Kv (1K)	Kv (2K)	Kv (max)	Seat Authority
ED 15mm Angle	0.35	0.65	1.79	0.87
ED 15mm Straight	0.35	0.57	1.01	0.69

### PART NUMBERS

Description	Part No.
New RT2I2 TRV with 8mm angle valve	08 09 008
New RT2I2 TRV with 10mm angle valve	08 09 010
New RT2I2 TRV with 15mm angle valve	08 09 015
New RT2I2 TRV sensing head	08 09 099
New RT2I2 TRV with 15mm straight valve	08 09 115
New RT2I2 TRV with 15mm angle valve and 10mm push-fit elbow	08 09 211
New RT2I2 TRV with 15mm straight valve and 10mm push-fit elbow	08 09 213
New RT2I2 TRV with 15mm angle valve and lockshield	08 09 260
New RT2I2 TRV with 15/10/8mm angle valve and lockshield	08 09 261
New RT2I2 TRV with 15mm angle valve, lockshield and 10mm push-fit elbows	08 09 263
New RT2I2 TRV with 15mm angle valve and DOTP lockshield	08 09 264

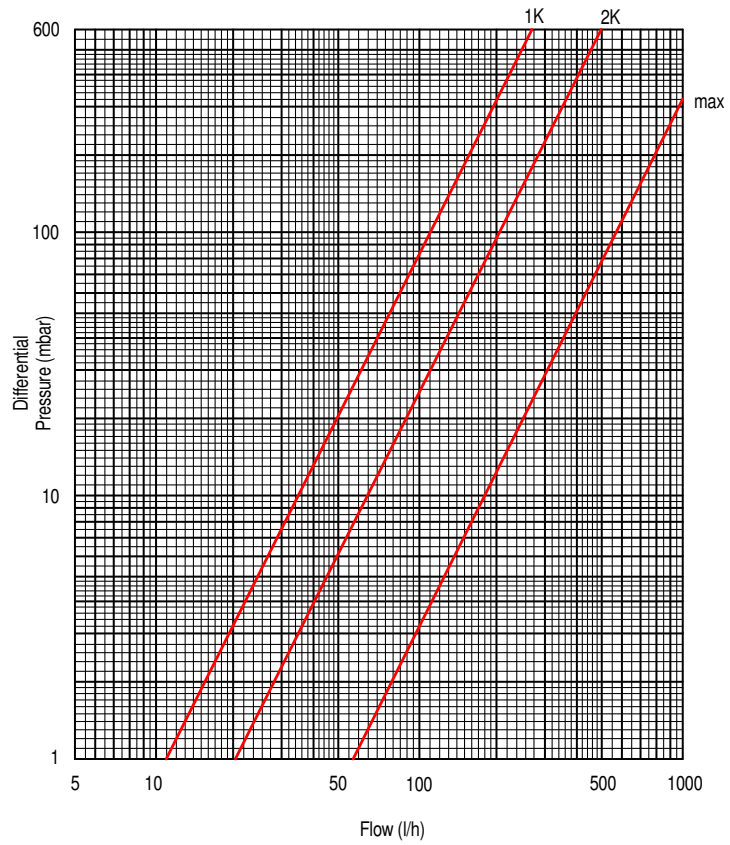
### CHROME ACCESSORIES

Description	Part No.
15mm angle lockshield	07 05 900
15mm angle lockshield with DO TP	07 05 901
Drain off tail-piece	07 05 902
15mm angle lockshield with integral DO TP	07 05 903
10mm push-fit elbow	07 05 904
15mm push-fit elbow	07 05 905
15mm straight lockshield	07 05 906
10mm compression elbow	07 05 907
15mm compression elbow	07 05 908

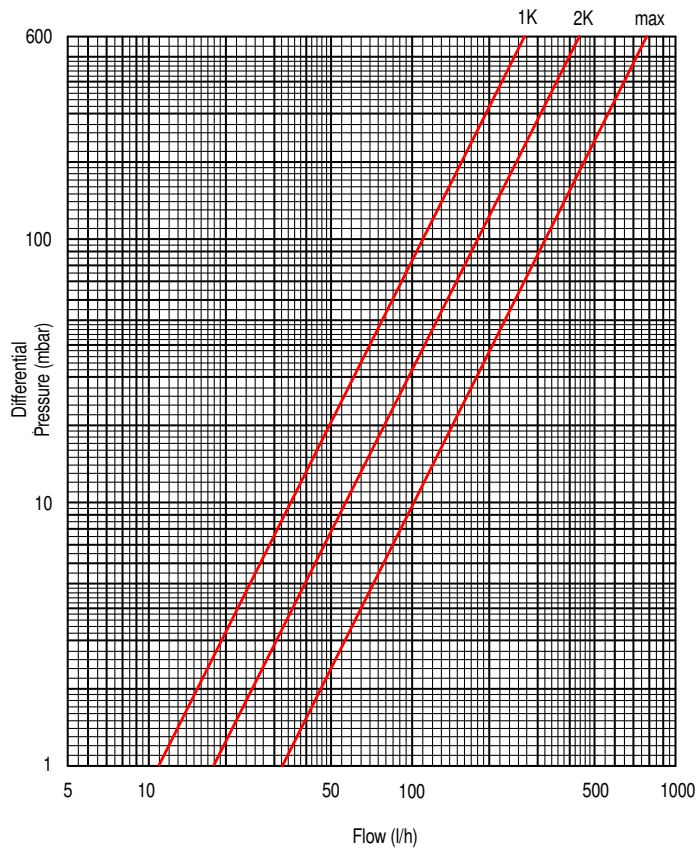
NB: 8mm and 10mm valves comprise of a standard 15mm body with reducers.



**FLOW CAPACITY GRAPH FOR  
RT212 ED 15MM ANGLE VALVE**



**FLOW CAPACITY GRAPH FOR  
RT212 ED 15MM STRAIGHT VALVE**



Join our professional installer club today and benefit from extended guarantees, priority support and much more.

[www.draytoncontrols.co.uk/9degrees](http://www.draytoncontrols.co.uk/9degrees)

Customer Service Support (Sales & Technical): **0333 6000 622**

[www.draytoncontrols.co.uk](http://www.draytoncontrols.co.uk) | [customer.care@draytoncontrols.co.uk](mailto:customer.care@draytoncontrols.co.uk)



**D27-13**

In accordance with our continuous improvement procedures, we reserve the right to change design features and specifications without prior notification. The Data contained in this document is for guidance only. Drayton accepts no liability for any consequential losses, injury or damage resulting from the use of this document or the information contained within.

