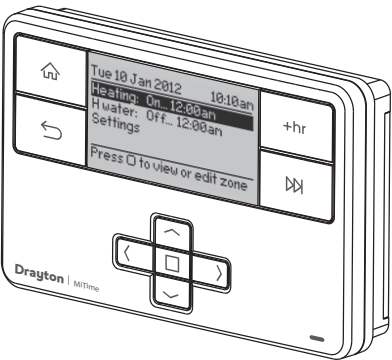


MiTime™ Programmer Series  
Dual Channel

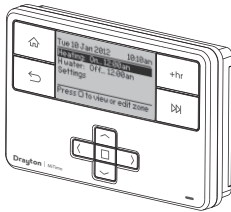
Model: T721R



Technical Helpline: 0333 7000 622  
Website: [www.draytoncontrols.co.uk](http://www.draytoncontrols.co.uk)  
E-mail: [customer.care@draytoncontrols.co.uk](mailto:customer.care@draytoncontrols.co.uk)  
@DraytonControls  
/DraytonControls  
401 Southway Drive  
Plymouth  
PL6 6QT  
United Kingdom  
EU Design Regs:- 002180638-1/2/3  
User Guide 06490187001 Iss F



HOMEOWNER Guide



What is a programmer?  
... an explanation for householders

Programmers allow you to set 'On' and 'Off' time periods. Some models switch the central heating and domestic hot water on and off at the same time, while others allow the domestic hot water and heating to come on and go off at different times.

Set the 'On' and 'Off' time periods to suit your own lifestyle. On some programmers you must also set whether you want the heating and hot water to run continuously, run under the chosen 'On' and 'Off' heating periods, or be permanently off.

The time on the programmer must be correct. Some types have to be adjusted in spring and autumn at the changes between Greenwich Mean Time and British Summer Time.

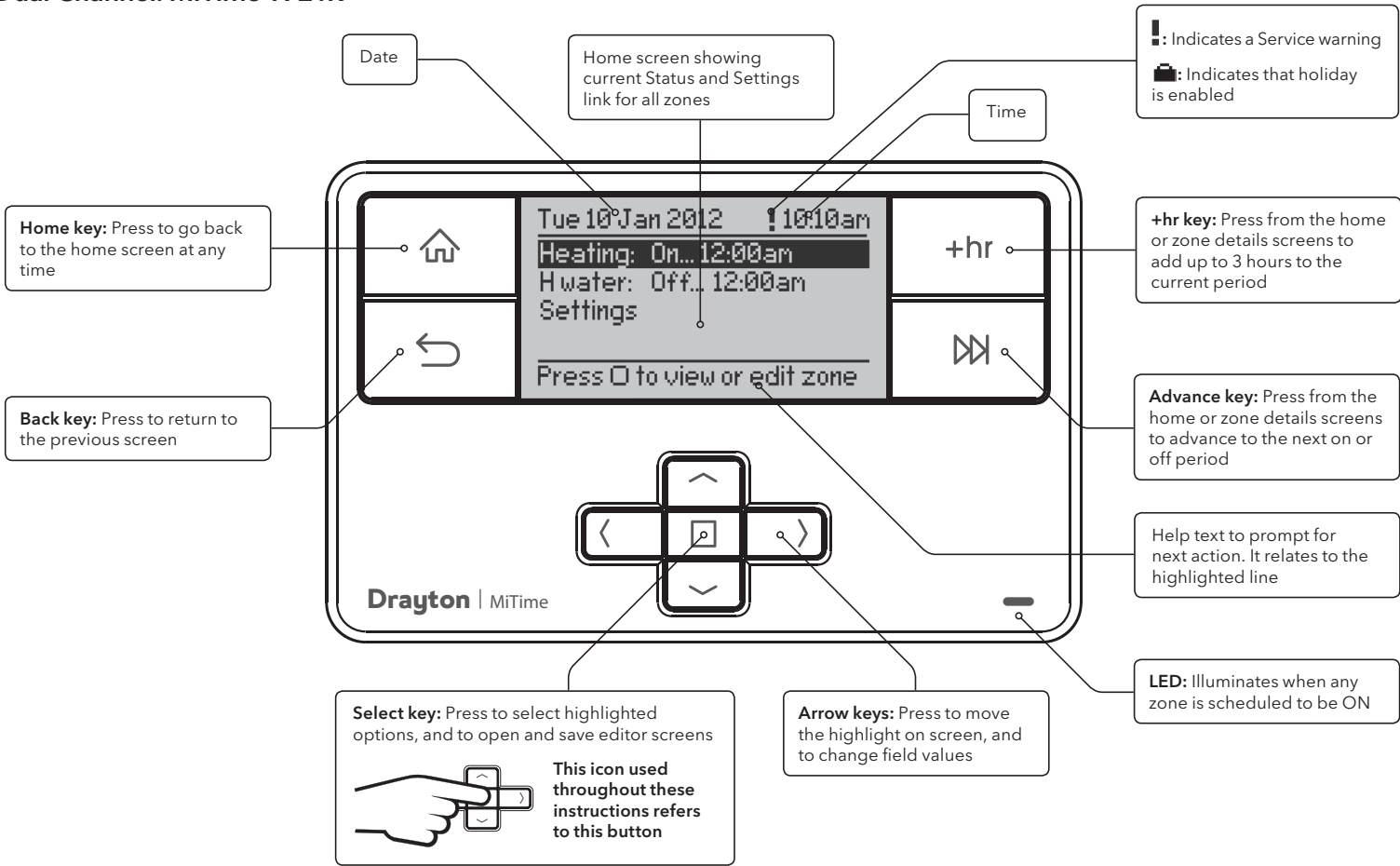
You may be able to temporarily adjust the heating programme, for example, 'Override', 'Advance' or 'Boost'. These are explained in the manufacturer's instructions.

The heating will not work if the room thermostat has switched the heating off. Also, if you have a hot-water cylinder, the water heating will not work if the cylinder thermostat detects that the hot water has reached the correct temperature.

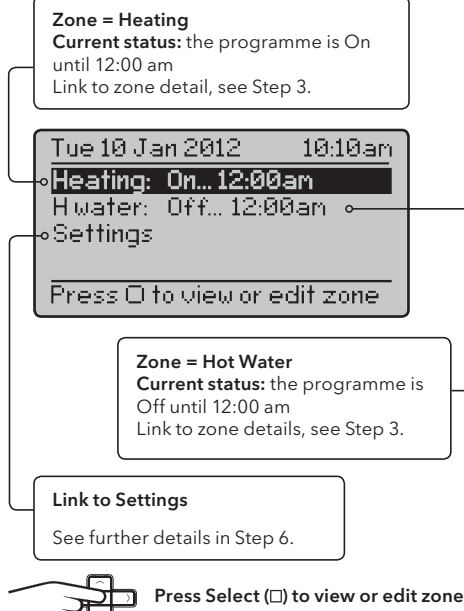


Step 1: Keys and Display

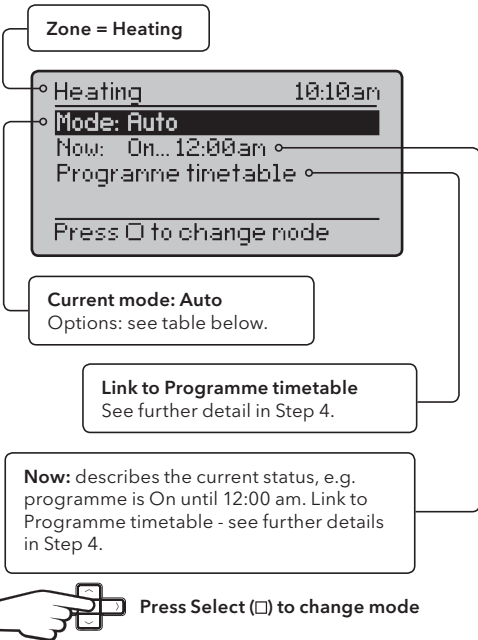
Dual Channel: MiTime T721R



Step 2: Home Screen

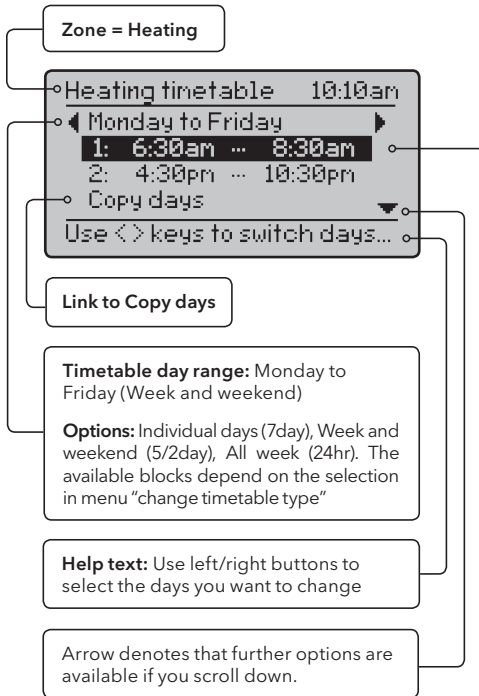


Step 3: Zone Details



Mode:	Description:
Auto	The programmer will control the ON & OFF times in line with the programmed timetable
Always Off	The selected zone will be OFF
Always On	The selected zone will be ON
All Day (first on / last off)	The programme will control the ON & OFF times in line with the programmed timetable, but using only the first ON event and the last OFF event - it will remain ON in between these two periods.

Step 4: Prog. Timetable



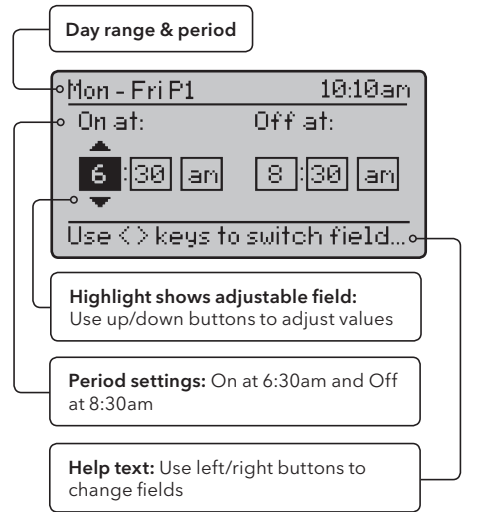
**Period 1 settings:** describes the current timetable settings, e.g. Heating has been programmed to turn On at 6:30am and go off at 8:30am

**Period 2 settings:** describes the current timetable settings, e.g. Heating has been programmed to turn On at 4:30pm and go off at 10:30pm

Press select (□) when highlighted to adjust settings (see Step 5)

Up to 4 periods can be programmed

Step 5: Period Settings

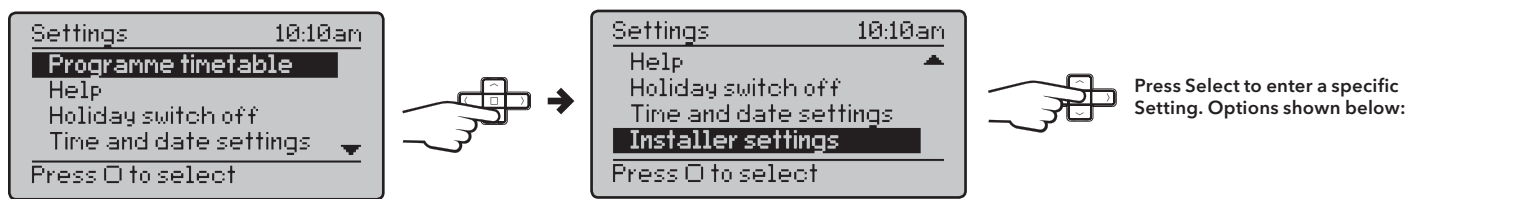


Stored programmes

MiTime contains 3 pre-set programmes. An example is shown below. These programmes can be modified according to personal needs and can be stored by using a name. Via this name they also can be reloaded. Once a programme has been modified, the original factory pre-set will no longer be available. On a System Reset, only the current loaded programme will be replaced with the factory setting - see Installation Guide Step 4.

Programme 1 Example:	All week	Week & Weekend
1st On	6:30am	6:30am
1st Off	8:30am	8:30am
2nd On	4:30pm	4:30pm
2nd Off	10:30pm	10:30pm

Step 6: Additional User Settings



Feature:	Description:	Factory Pre-Set:
Programme Timetable	On & Off times for the current period can be modified. See description in 'Step 4'	
Copy days	Will copy the current day to one or more other days	
Add Period	Adds a Time event. It will be added at the correct position within the day. There is a maximum of 4 periods.	
Remove Period	Removes the selected period. There needs to be at least 1 period	
Change Timetable Type	The visible day-blocks available in "programme timetable" can be defined, see Step 4	
Individual days	Each day can be programmed individually	
Week and weekend	Mon... Fri and Sat... Sun can be programmed as 2 blocks	Default
All week	Mon...Sun can be programmed as one block	
Stored programmes	MiTime contains 3 pre-set programmes. These programmes can be modified according to personal needs and can be stored by using a name. Via this name they can also be re-loaded. Once a programme has been modified, the original factory pre-set will no longer be available unless a System Reset is applied - see Installation Guide Step 4.	Programme 1
Load stored programme	A pre-set programme can be loaded	
Save current programme	The current programme can be saved by name (Each pre-set program includes: Individual days, week/ weekend, all day and custom day schedules)	

Feature:	Description:	Factory Pre-Set:
Help Tips	Describes the button functions	
Holiday switch off	In the period until holiday starts the product will operate normally. If holiday is disabled manually or terminates automatically, the mode before start of holiday will be re-instated.  An enabled holiday will be indicated with a suitcase symbol in the top line. If holiday is active, in the Set: line the holiday end date will be indicated. In the Summary screen the suitcase will be visible together with the holiday temperature.	
Status	Enable or disable holiday mode.	Disabled
Zones	Holiday mode can be applied to a specific zone or all zones	All zones
Holiday start time (From)	Set the time for the start of your holiday	Current time - nearest hour
Holiday start date (From)	Set the date for the start of your holiday	Today
Holiday end time (To)	Set the time for the end of your holiday	Current time - nearest hour
Holiday end date (To)	Set the date for the end of your holiday	Today + 1 week
Time and date settings		
Set time	To set time of day	Factory set
Set date	To set date	Factory set
Daylight saving	To enable or disable daylight saving	Enabled
Clock format	To select 12h or 24h clock mode	12hr

🔧 **INSTALLATION** Guide **Step 1: Mounting the Wall-plate** ➔

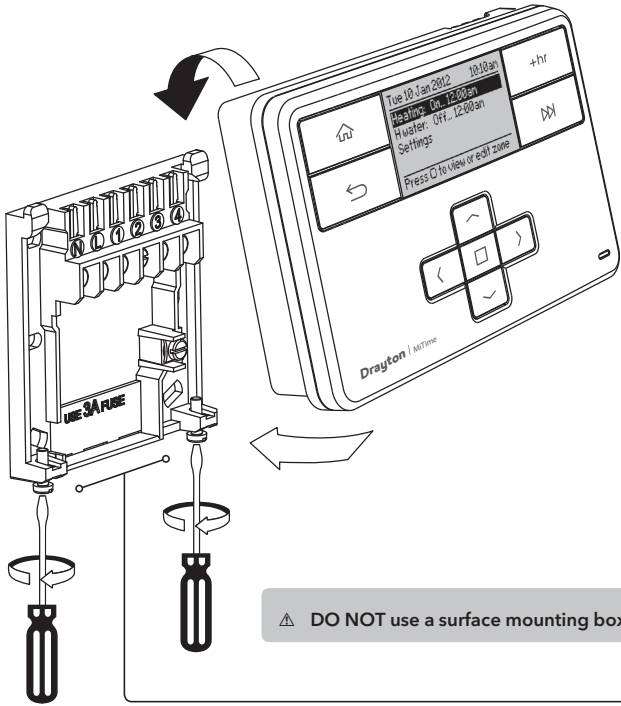
**Step 2: Wiring** ➔

**Step 3: Connection Charts**



**⚠ IMPORTANT:**  
Installation must only be carried out by a qualified electrician or heating engineer.  
Make sure mains input has a 3 amp fuse.

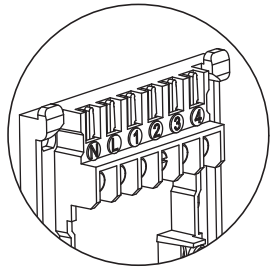
**⚠ CAUTION!** Before installation, make sure the mains supply is switched off!



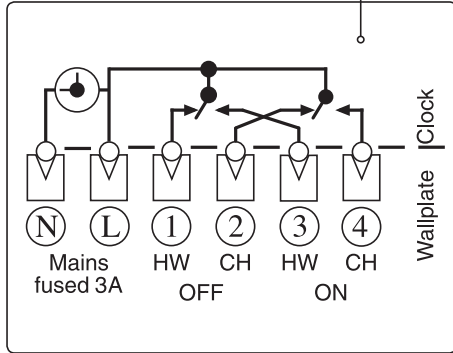
**Option 1: Fitting a new wall-plate**  
The ideal location is 1.2m above floor level, with reasonable lighting, good access, no condensation, no extremes of temperature and a supporting surface that fully covers the back of the unit. Position with 70mm clearance to the right, 25mm above and sufficient room to access the securing screws underneath. Fix, with terminals at the top, either direct to a flat wall using wall plugs and No. 6 x 1" (25mm) woodscrews, or on a flush mounting single conduit box type UA1 (BS4662) using M3.5 x 14 bolts.

**Option 2: Using an existing wall-plate**  
Loosen the securing screws on the old programmer and unplug it. Check that there is 70mm clearance to the right of the wall-plate and 25mm above it. Check the wiring diagram for your product model to compare terminals and, if necessary, change the wiring of the wall-plate to suit. Now plug the MiTime unit into the wall-plate and tighten the securing screws.  
Check the 3A fuse, and switch on the mains.

Connect the wiring as shown below.

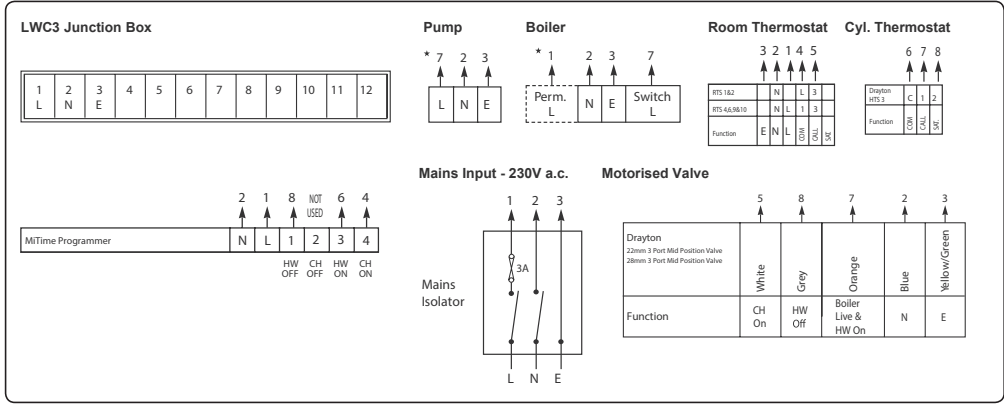


**Internal Wiring**

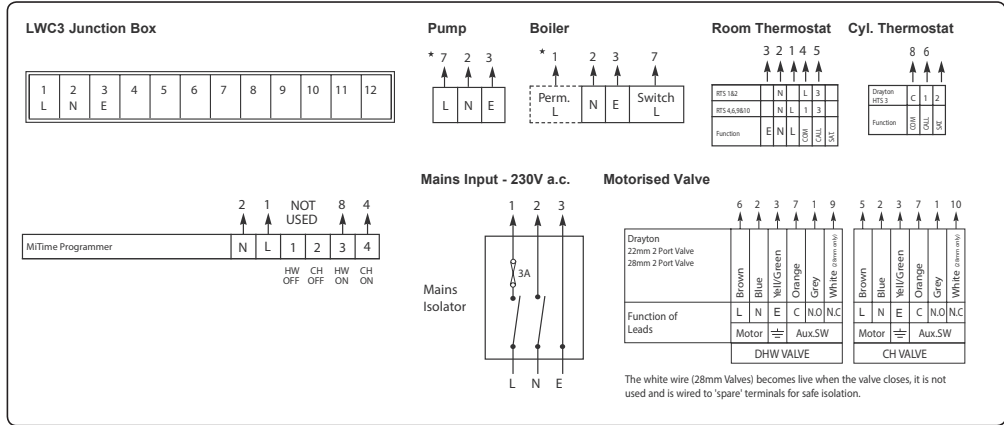


**⚠ IMPORTANT:**  
Always switch off the mains before removing the MiTime programmer - and never fit it to a live wall-plate!

**Biflo system: Model T721R**



**Twinzone system: Model T721R**



Arrowed numbers relate to the junction box.  
**\* Consult boiler handbook for details of pump overrun wiring.**

Make the wiring connections, as shown, for the appropriate system. For surface wiring, snap out the cable entry strip on the bottom edge of the wall-plate. MiTime units are double-insulated and need no earth connection, but an earthing continuity (loop) terminal is provided for convenience.

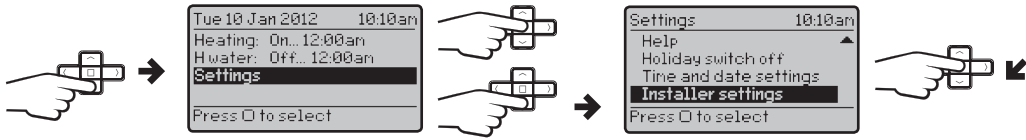
After wiring, plug in the unit and tighten the securing screws. Check the mains input has a 3A fuse, and switch on the mains.

**⚠ IMPORTANT:**  
Always switch off the mains before removing the MiTime programmer - and never fit it to a live wall-plate!

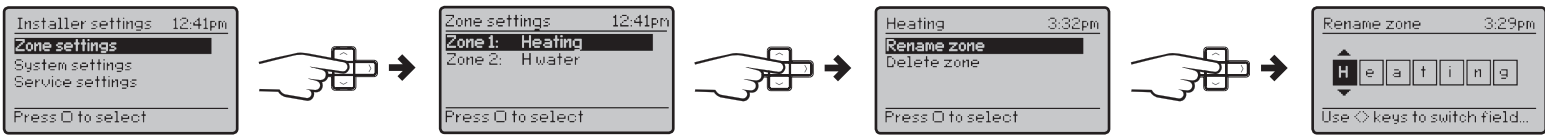
**Step 4: Installer Settings**

**Technical Data**

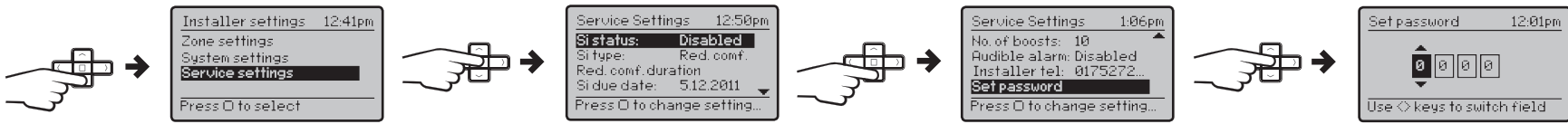
From the Home screen, select **Settings**, then **Installer settings** as shown.



From here you can edit the assigned zones, rename them if required and adjust the Service settings.



If using the Service feature, remember to set the **Password** when complete.



**🔧 Installer Notes:**

Feature:	Description:	Factory Pre-Set:
<b>Installer Settings</b>	<b>! CAUTION!</b> These settings should only be modified by a qualified person. They can influence safety and the proper functioning of the system.	
<b>Zone Settings</b>	Customise the MiTime according to personal requirements	
Select zone	Select a zone for the following actions	
Rename zone	To rename an existing zone	Heating, H Water
Delete zone	To delete an existing zone. The last zone cannot be deleted	Min. 1 Zone
Add Zone	Add a new zone, apply a name & bind a thermostat. A time table can be applied.	Max. 2 Zones
<b>System Settings</b>	These are the settings which will be applied to the MiTime unit	
View product information	View the product details, e.g. Part number, Firmware revision etc.	
Backlight settings	Available options are: On with timeout, Always On, Always Off	On with timeout
Screen lock	Enable or disable the lock in the MiTime unit To Lock: Enter a 3 digit code for protection To Unlock: Enter the 3 digit code	000 Master Code 401
Powersave	To reduce power use when not being adjusted. Available options are: Powersave off, partial display with key data, no display until button press	Powersave off
System Reset	Will reset all settings to factory pre-sets	
<b>Service Settings</b>	To help comply with regulation 36 of the Gas safety [Installation & Use] regulations 1998	
Si Status	Enable or disable Service mode	Disabled
Si Type	Select between, Reduced Comfort, Switched Off & No Effect (warnings only)	Reduced Comfort
Reduced comfort duration	Set the duration for the reduced comfort setting (0 to 60mins.)	15 min.
Si due date	Set the date the next boiler service is due	Today
Warning start	Set the number of days for the on-screen service due warning (0 to 60 days)	30 days
Boost status	Enable or disable Service Boost	Disabled
No. of boosts	Set the number of Boosts to be available after service is due (1 to 99)	10
Audible Alarm	Enable or disable Service Alarm	Enabled
Installer tel	Enter the Installer telephone number if required	
Set password	Set password to restrict access to the Service settings	0000

MiTime T721R	
<b>Voltage</b>	230V a.c. +10% -10% 50Hz
<b>Switch Rating</b>	2 (1) A 230V a.c. each switch
<b>Ambient temp</b>	Operating: 0° to 45°C Storage: -20°C to 50°C
<b>Without mains power</b>	Display: blank Time: always kept Programme times: always preserved
<b>Programming resolution</b>	1 minute
<b>Wiring</b>	Fixed wiring only, to comply with current IEE regulations
<b>Maintenance</b>	Must be maintained by a qualified electrician or heating engineer
<b>Pollution degree</b>	2
<b>Rated impulse voltage</b>	2.5kV
<b>Ball pressure test temperature</b>	75°C
<b>Relevant EC Directives:</b>	2014/35/EC Low Voltage Directive 2014/30/EC Electromagnetic Compatibility Directive 2006/66/EC Battery Directive 2011/65/EU RoHS Directive
<b>Applied Standards:</b>	EN60730-1; EN60730-2-7